

□ **Özbek, Melih**
 ■ **Kostyak, Mike**

[Özbek, Melih]

Notes by Özbek. **1.e4 c5 2.Nf3 Nc6 3.d4 cxd4 4.Nxd4 Qb6 5.Nb3**

[5.Be3 Qxb2 6.Nb3]

5...Nf6 6.Nc3 g6

[6...d6 7.Nd5 Nxd5 8.exd5 Ne5]

7.Be3

[7.Nd5! Nxd5 8.exd5 Ne5 (8...Nb4 9.c3 Na6 10.Be3 Qd6 11.Qd4 Qf6 12.Qxf6 exf6 13.0-0-0) 9.f4]

7...Qc7 8.f3

[8.Nd5 Nxd5 9.exd5 Ne5 10.f4 Nc4 11.Bd4]

8...Bg7 9.Qd2 h5?! 10.0-0-0 a6 11.Be2

Rather prosaic play. Missing ideas like Nd5 earlier and Bg5 or f4 here should be alarming for the first player! These ideas make so much sense - Black is not well developed, so White should strive to open up the position. 11.Be2 clearly does not accomplish this!

[11.Bg5! b5 12.Kb1]

[11.f4! d6 12.Nd5 Nxd5 (12...Qb8 13.Bd3 b5 14.Nxf6+ Bxf6 15.e5! dxe5 16.Be4!) 13.exd5 Nd8 14.Bd4]

11...d6 12.Kb1 Bd7 13.Rhe1

[13.Bg5]

[13.f4]

13...b5 14.h3 Again, Bg5 or f4 are better ideas.

Ne5 15.Bg5! Finally! Be6!

[I saw the following variation before I played 15. Bg5, and I was hoping that my opponent would go for it: 15...Nc4 16.Bxc4 bxc4 17.Bxf6 Bxf6 18.Nd5 Qb7 19.Nxf6+ exf6 20.Na5 Qb5 21.Qxd6 Rb8 22.b3 White is winning.]

16.Nd5?

[Much better was 16.f4! Nc4 17.Bxc4 Bxc4 (17...bxc4 18.Nd4 Rb8 19.e5 Qb7 20.b3

B33

2071

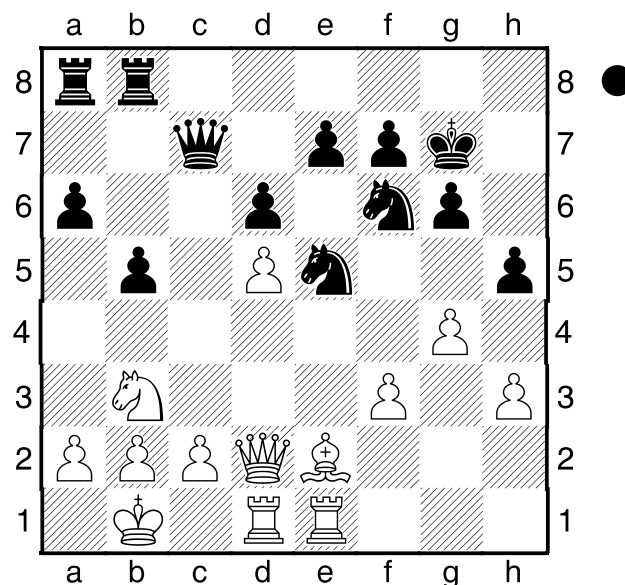
1768

dxe5 21.fxe5 Nd5 22.Nxe6 fxe6 23.Nxd5 exd5 24.Qxd5 Qxd5 25.Rxd5 Rb5 26.Rxb5 axb5) 18.e5]

16...Bxd5 17.exd5 0-0 Now Black's initiative on the queenside looks more dangerous than White's attack on the kingside. Nevertheless, White is slightly better in this position. **18.Bh6**

[18.c3]

18...Rfb8 19.Bxg7 Kxg7 20.g4! Diagram



White has to start his own attack as soon as he can. **a5 21.gxh5 Nxh5 22.Qd4?**

[22.Nd4! Nf6 23.Qg5 I missed this Queen move. The threat of Nf5 is menacing. Nh7 (23...Nxd5 24.Nf5+ Kg8 25.Rxd5 e6 26.f4 exf5 27.fxe5 dxe5 28.Bxb5) 24.Qg3 Kh8]

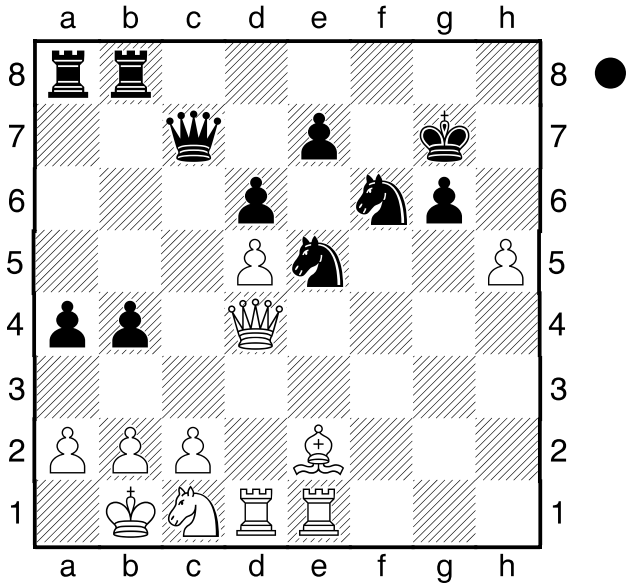
22...Nf6 23.f4 Nc4 24.f5 Ne5 25.fxg6

[25.Qd2 a4 26.Nd4 Nxd5 27.fxg6 Nf6 28.Nf5+ Kf8 29.Qh6+]

25...fxg6 26.h4 I thought the knight was ideally placed on c1, and therefore I'm not moving my queen elsewhere. Wrong! The knight belongs on d4, especially now, because the e6 square has been weakened. Simply winning should be Qf4. **a4 27.Nc1 b4 28.h5 Diagram**

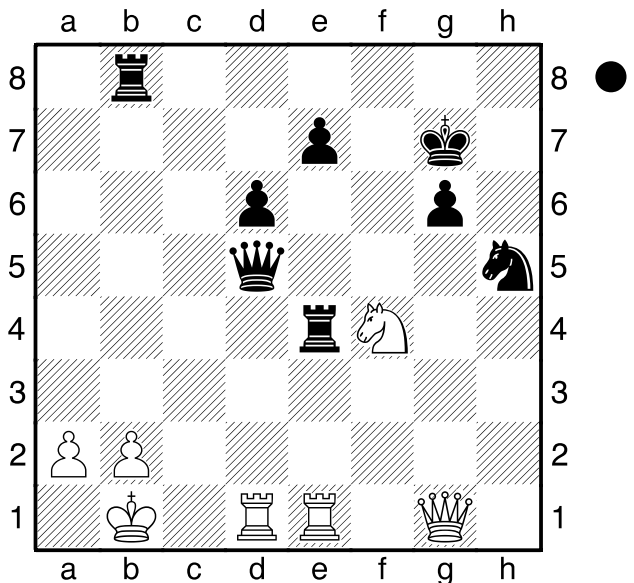
b3 29.cxb3 axb3 30.Nxb3 Qd7! 31.Nc1

[Too passive, now Black takes over the



initiative completely. Instead, 31.hxg6 Ra4 32.Qe3 Qf5+ 33.Bd3 White has a big advantage.]

31...Ra4 32.Qe3 Re4 33.Qg3 Qf5 34.Bd3
 [34.Ka1 is also possible.]
34...Nxd3 35.Nxd3 Nxf5 36.Qg1 Qxd5
37.Nf4 Diagram



Rxe1

[At this point, we both missed the rook sacrifice on b2 which wins on the spot! After the game, Mike suggested it, but we thought that after 40.Kb1 White was okay, missing 40..

Rb4+ which leads to a mating attack. 37...Rxb2+!! 38.Kxb2 At this point, we both missed the rook sacrifice on b2 which wins on the spot! After the game, Mike suggested it, but we thought that after 40.Kb1 White was okay, missing 40..Rb4+ which leads to a mating attack. Qb5+!! 39.Ka1 Qe5+ 40.Kb1 (40.Qd4 Rxd4 41.Ne6+ Qxe6 42.Rxe6 Rxd1+) 40...Rb4+ 41.Kc2 Rb2+ 42.Kd3 Nxf4+ 43.Kc4 d5+ 44.Rxd5 Qxd5+ 45.Kc3 Qd2+ 46.Kc4 Qb4#] [37...Qf5 38.Nxf5+ Kh8 39.Ng3 Rxe1+ 40.Nxf5 In time pressure, I had little time to calculate. I thought I would be up a piece in this variation, missing that my knight is hanging on f5. However, both sides have about equal chances in the resulting endgame. Rxf5 41.Rxf5 gxf5]

38.Qxg6+ Kh8 Wrong square!
 [38...Kf8 39.Rxe1 (39.Nxd5 Rxd1+ 40.Kc2 Rxd5-+) 39...Nxf4 40.Qh6+ Kf7 41.Qxf4+ Ke8=]

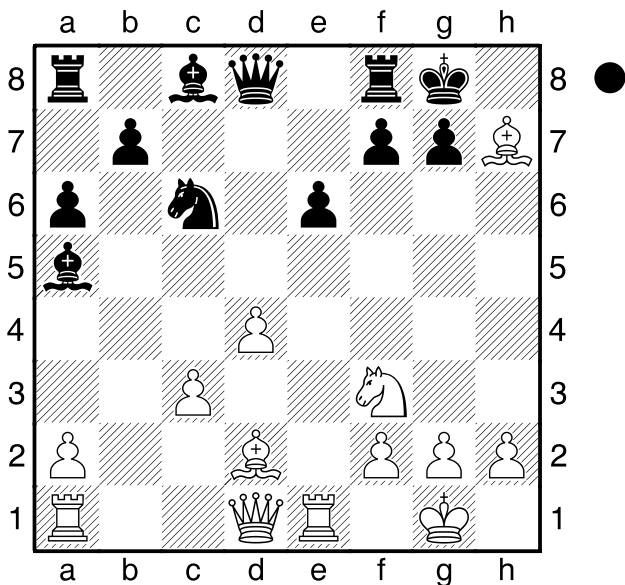
39.Nxd5 Rxd1+ 40.Kc2 Rxd5 Now with a short combination, White wins. **41.Qh6+! Kg8 42.Qe6+ Kg7 43.Qxd5 Nf6 44.Qg2+ Kf7 45.b3 Rc8+ 46.Kb2 Rc5 47.a4 Ke6** [47...Nd5]

48.b4 and White eventually queened the a pawn, after which Black resigned. **1-0**

□ Robert Atwell
 ■ Henry Doktorski

Round 6, 2014 Richard Abrams Memorial
 [Atwell,Robert]

Analysis by Atwell, unless noted. 1.e4 c6 2.d4 d5 3.exd5 cxd5 4.c4 e6 5.Nf3 Nf6 6.Nc3 Nc6 7.cxd5 Nxd5 8.Bd3 Bb4 9.Bd2 0-0 10.0-0 a6 11.Re1 Nxc3 Ozbek: Here, I happened to walk by, and I remember thinking, does Bxh7+ work here? 12.bxc3 Ba5 13.Bxh7+!? Diagram



This "standard" sacrifice is by no means winning here. 13 Ng5 is also possible, but the engine Fritz 8 thinks simply 13 Qe2 or 13 Rb1 keeps the upper hand for White. Kxh7 14.Ng5+ Kg6

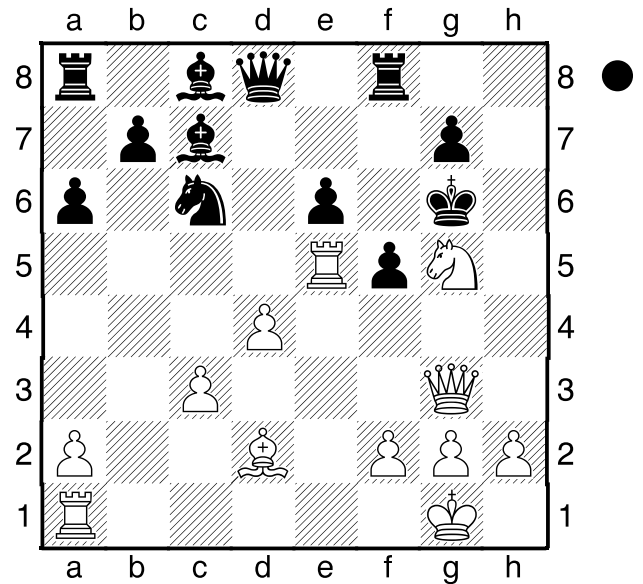
[14...Kg8 loses at once to 15.Qh5 Re8 16.Qxf7+ Kh8 17.Re4]

15.Qg4 f5
 [15...Kf6 16.Nxe6! wins]

16.Qg3 Bc7! The B on a5 saves Black
 [16...Kf6 17.Nxe6! again wins for White]

17.Re5!? Diagram
 [White could have simply played 17.f4 Then after: Kf6 (this is now possible because

B14 the White QB has lost access to g5) 18.Nh7+ Kf7 19.Nxf8 Kxf8 is rated by Fritz as equal]



17...Nxe5! Black has 3 reasonable moves, 17... Bxe5, 17 ... Nxe5 and 17...Kf6. Fritz likes this one the best. Incidentally 17...Kf6 is now possible because 18 Nxe6? fails to 18... Bxe5! winning for Black. 18.dxe5 White now realizes that his intended 18 Nxe6+ will not win a queen because his own queen is also hanging after 18... Ng4! It was still possible to play this, however. One complex line from Fritz is:

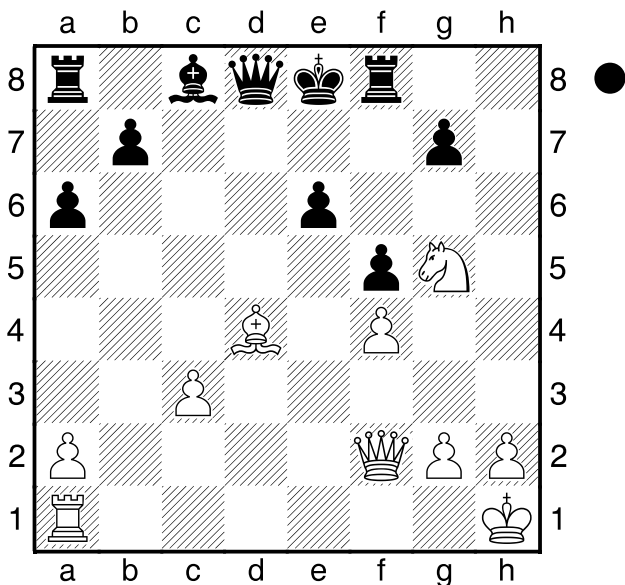
[18.Nxe6+ Ng4 19.Nxc7 Ra7 20.f3 b5 21.Bf4 Rf7 22.fxg4 Raxc7 23.Bxc7 Qxc7 24.gxf5+ Kh7 25.Qh3+ Kg8 26.g4 Bb7 White has 3 pawns for a piece but Black's position is much better.]

18...Bxe5 19.f4 Forced since 19 Qxe5? Qxd2 wins for Black White once again threatens 20 Nxe6+. Bd4+ This move is reasonable; Black is planning to divert the queen from g3 with the bishop that was going to be captured anyway. Fritz likes 19...Qb6+! better, giving:

[Ozbek: I was looking at Qb6+ here: 19...Qb6+! 20.Be3 Qb2 21.Re1 Bxc3 22.Nxe6+ Kf7 23.Ng5+ Kg6 24.Ne6+ with a draw.]

20.Kh1 Bf2 21.Qxf2 Qd3? Black tries to prevent the White queen from returning to g3. But with the possible fork on e5, this just loses time. Fritz seemed to like 21...Qe8 best, and just gave White a slight edge after that move.
22.Nf3 White could play 22 Qh4 here, because after 22... Qxd2 the double attack 23 Nf3 threatens both mate on e5 and the Black queen. Curiously Fritz ranked 22 Nf3 as stronger than 22 Qh4, because it considered that Black could hold out longer in the resulting Q vs R+B position after 23 Qh4 than it could against 23 Nf3.
Qd8 The queen has to move again, and this is probably best.
23.Be3! The unused bishop heads for the d4-h8 diagonal. On 23 Qg3+ Black does not play 23...Kh7? allowing 24 Ng5+ winning quickly, but heads for e8 with 23...Kf7. The Black king now goes to e8 anyway.
Kf7 24.Ng5+ Ke8 Black's exchange ahead doesn't compensate for his badly exposed king and undeveloped queenside.
25.Bd4 Diagram

33.Rxe7+ 1-0



Ozbek: All Black pieces are on the back rank, and the King is very unhappy in the center! Black surely can't survive.
Rf6 26.Qe2! g6 27.Qe5 Rf8 28.Re1 Qe7 29.Bc5 Qf6 30.Qd6 Rf7 31.Nxe6 Bxe6 32.Rxe6+ Re7

Sairam Subramanian Gopal **1737**

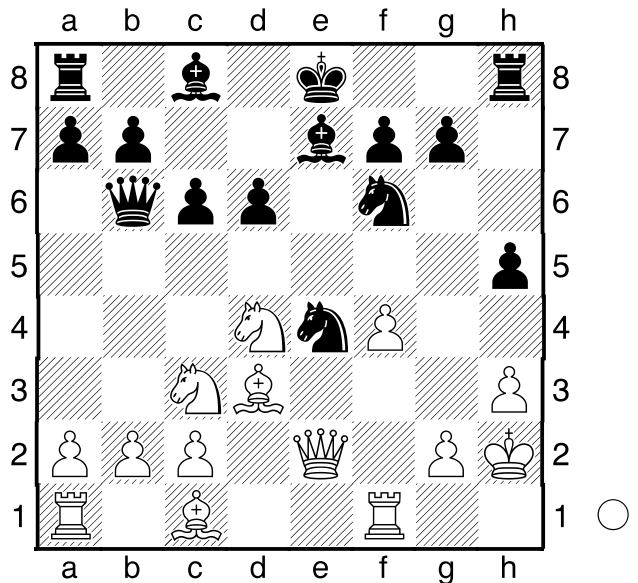
Dean, Edward Thorp **2147**
 PCC Championship (6) 17.06.2014

Analysis by Gopal, unless noted. **1.d4 d6**
 Tournament setting: This was the last game in the tournament, I played top seeded player in the club. I had to win to get into the leaderboard, and he had to draw/win. I had the White pieces but he was 410+ points higher rated than me! I went with no expectations. I used engines only partially to analyze this game. I kind of knew that he would play d6 against d4, but I did not particularly prepare for it. **2.e4**
 Transposed into an e4 opening (piric defense) **Nf6 3.Nc3 Nbd7 4.f4** I think this is the classical set up against the Pirc. I liked my control on central squares with my 3 pawns. **e5**
 I think this is Philidor defense now? Uzbek: It's a hybrid of sorts! **5.Nf3 exd4 6.Nxd4 Nc5 7.Bd3** I see in my notes that I had spent 17 minutes for this move. In hindsight, it is a little unnecessary. It is a game with 2 hours for each side, and he already had like 25 minute advantage on clock. The main reason I spent a long time was I wanted to protect my e4 pawn without giving up my light square bishop. But at the end I did not find anything convincing.

[Uzbek: Qf3 looks more natural, as it's not yet clear where the light squared bishop should go. Have a look at this crazy variation! **7.Qf3 Bg4 8.Qe3 Be7 9.f5 0-0 10.h3 Nfxe4 11.Nxe4 Bh4+ 12.g3**]

7...Be7 8.0-0 c6 9.h3 to control the g4 square to avoid bishop or knight jumps. But my King doesn't look safe now with h and f pawns moved. **Qb6!** I thought it was good move by opponent. Annoying for me, the queens attacks b2 well as in a beautiful diagonal watching my unprotected knight as well as the king himself. I was already little uncomfortable. **10.Kh2**

My opponent asked me why not Kh1, I wanted to control the g3 square, that's why went to h2. Probably king would have been safer on h1. **h5 11.Qe2** He can win the central e pawn due to the discovery on my knight on d4. I thought I had a decent compensation with the e file. But still was not happy with my position playing a pawn down. **Ncxe4?** Diagram
 [11...Ng4+ 12.Kh1 (12.hxg4 hxg4+ Looks pretty tough to hold. Stockfish says evaluates like -0.5 but I would say its severe than that on board.)]



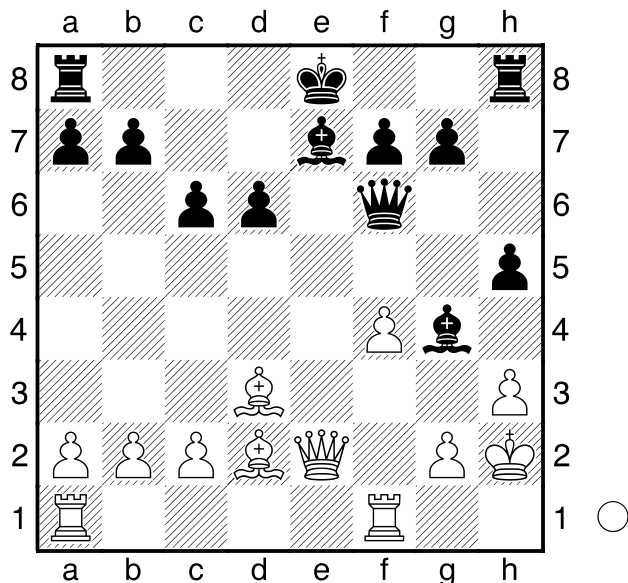
He decided to take the pawn. Uzbek: with a King in the center, this is a very risky thing to do! Now both Kings are not very happy. **12.Nxe4 Qxd4** Uzbek: I was watching the game at this point and thought that 13.c3! gave White an advantage. What Gopal played is also logical. **13.Nxf6+**
 [13.c3 Qb6 (13...Qd5 14.c4 Qd4 15.Be3 Bg4 16.Rf3 Bxf3 17.gxf3 the Queen is trapped!) 14.Nxd6+ Kf8 15.Nc4]
13...Qxf6 14.Bd2 I did not evaluate this position in detail before I played 11. Qe2. The more I looked into it now, the more I liked it. Now his King in the center is a bigger problem

than my king. His e7 bishop is in extreme pressure. **Bg4** Diagram

[14...Bf5 My opponent told me this was possible too. I had planned to take the bishop in the game in case of this move, but computer says Rae1 is much better for white. I agree now.

A) 15.Rae1 Bxd3 16.Qxd3 you cannot castle here as the bishop needs to be protected. Kf8 (16...0-0 17.Bc3 Qh4?? 18.g3 queen trapped.) 17.Bc3 Looks very nice for white.;

B) 15.Bxf5 Qxf5 16.Rae1 Qd7 If I remember correctly this was the variation. discussed by us after the game. Looks decent enough for black with a pawn up. 17.Bc3 Kf8]



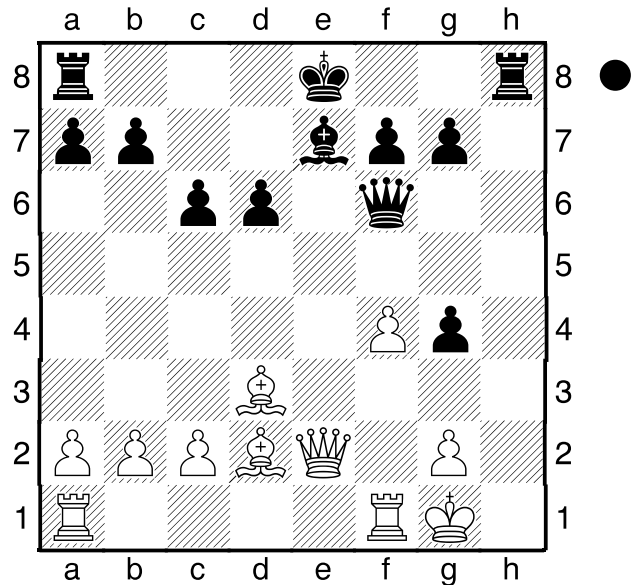
My opponent took 30 minutes for this move! Now we were equal on time. I was happy about that. At the board I thought this was the only move to get nice play. But my opponent showed that Bf5 wasn't bad either. **15.hxg4??** I think this will surprise most of you. I think I was pretty crazy to take the bishop and open up the h file. But I thought he did not have enough pieces to attack. He just has a queen

and a rook. His e7 bishop is right now pinned and can't do much. I was over confident, calculated a few lines and then took the bait.

[15.Qe3 I think this move keeps the advantage for white.]

15...hxg4+ 16.Kg1 Diagram

[16.Kg3 Qh4# ofcourse I can't play this.]



I was little scared now but in fact I should have been terrified as it is totally lost for white. Please try to calculate the killer move for black!

16...Rh1+?? Uzbek: I was discussing this position with Sax outside the playing hall and I was telling him, rather excitedly: "16.Rh1+! 17. Kxh1 Qh4+ 18.Kg1 g3 leads to mate!" He

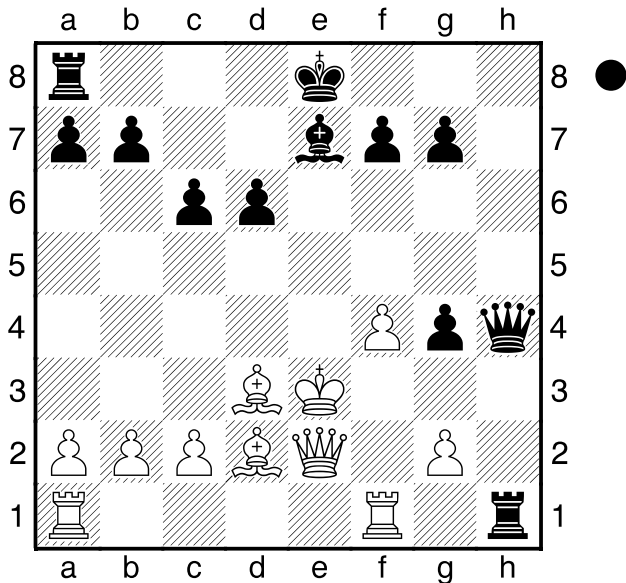
looked at me for a second, scratched his head, and said, "Well, what if he doesn't take it?", and that's when I realized, 17.Kf2 is a move! Therefore, I decided, 16..g3!, instead of 16.. Rh1+??, wins on the spot! Gopal: This is the line me and my opponent both calculated. Both we both missed the win for Black! Could you spot it ?

[16...g3!! white's toast now. Both of us missed the move!! 17.Qxe7+ this is the only mate saving move suggested by stockfish. (17.Rfe1 Rh1+ 18.Kxh1 Qh4+ 19.Kg1 Qh2+ 20.Kf1

17.Qxe7+ this is the only mate saving move suggested by stockfish. (17.Rfe1 Rh1+ 18.Kxh1 Qh4+ 19.Kg1 Qh2+ 20.Kf1

Qh1# that's how the tournament could have ended!) 17...Kxe7]

17.Kf2 Ozbek: Who doesn't love King hunts? And who cares if the King survives it or not? It's fun to watch! **Qh4+** **18.Ke3** Diagram



Qg3+ **19.Kd4 Rh5 20.f5** cutting off the rook to come to the other side to attack my king, also freeing up f4 for my bishop. **Kd7** My opponent had 18 minutes in the clock now and I had 33. And even though my king was in the middle, it is very tough to spot a finish under time pressure. **21.Rae1**

[21.Bf4 Probably was better for White. Qh4]

21...Bf6+ **22.Kc4 d5+** Run forrest run!
23.Kb3 c5 Once again, I became afraid of this move threatening c4 winning his lost piece.
24.c4 Since his king is on d7, pawn break in the center would help me attack his king for a change. **b5** again a nice move to keep on attacking!
25.Kc2 bxc4 26.Bxc4 Rb8

[26...dxc4 27.Qxc4 now f7 is hanging..! counter attack starts!]

27.Bb5+ He resigned! Phew! Wild wild game to finish off the tournament. I managed to grab the clear 2nd spot. Little lucky but I would take it!

1-0